

MEASURE L BOND UPDATE

November 13, 2018



Measure L – Overview

- Project Updates
- Program Schedule Review

Measure L – Project Updates

- **Vinci Park Elementary School - FIS**
 - Phase 2 – Exterior Work
 - Scheduled to complete in mid November
- **Piedmont Middle School - FIS**
 - Flexible Instructional Space is scheduled to complete in mid November
- **Piedmont Middle School - Parking**
 - Schedule to receive bids in December 2018
 - Recommendation of award at the January 15, 2019 Board Meeting
 - Construction is scheduled to start June 2019

Measure L – Project Updates

- **Ruskin Elementary School - FIS**
 - Flexible Instructional Space is scheduled to complete in mid November
- **Brooktree Elementary School - FIS**
 - Flexible Instructional Space is scheduled to complete in mid November
- **Cherrywood Elementary School - FIS**
 - DSA has approved the project
 - Project is currently out to bid, scheduled to receive bids in December
 - Recommendation of award at the January 15, 2019 Board Meeting
 - Construction is scheduled to start January 2019

Measure L – Project Updates

- **Toyon Elementary School - FIS**

- Receive bids October 31, received 7 bids and are within budget
- Recommendation of award at the November 13, 2018 meeting
- Start construction December 2018
- Completion FIS - March 2019

- **Morrill Middle School**

- In Progress:
 - Flexible Instructional Space is scheduled for completion in late November

Measure L – Project Updates

- **Northwood Elementary School - Portable Relocation**
 - DSA approval requires the District to add a driveway approach and vehicle gate at the southwest corner of the site
 - The Architect is working with the City of San Jose on the required permits
 - Work is anticipated to be completed by the end of November/early December

Measure L – Project Updates



Ruskin - FIS

Measure L – Project Updates



Piedmont - FIS

Measure L – Project Updates



Piedmont - FIS

Measure L – Project Updates



Brooktree – FIS

Measure L – Project Updates



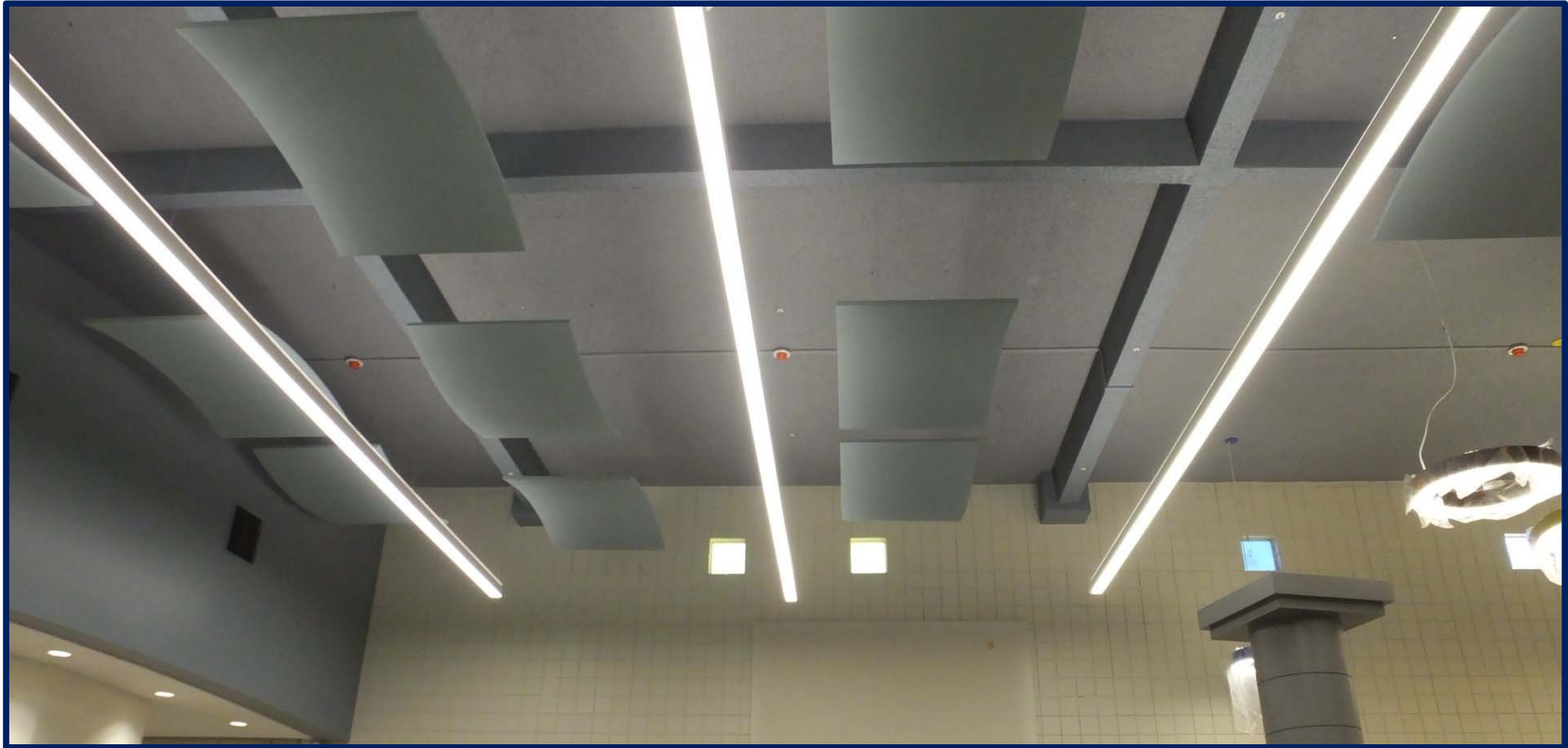
Brooktree – FIS

Measure L – Project Updates



Morrill - FIS

Measure L – Project Updates



Morrill - FIS

Thank You

